

RBMP Water body information sheet for water body 100136 in North East Scotland

General details

Water body name:	Loch of Strathbeg
Water body Identifier code:	100136
Area:	2.06 km ²
Water body category:	Lake
Baseline:	Y
River basin district:	Scotland
Area advisory group:	North East Scotland
Catchment:	Buchan Coastal
Associated protected areas:	Loch of Strathbeg - SPECIAL PROTECTION AREA Moray / Aberdeenshire / Banff / Buchan - NITRATE VULNERABLE ZONE
Associated groundwater:	Fraserburgh bedrock and extensive sand and gravel aquifers
Responsible body:	SEPA Aberdeen North
Heavily modified:	No
Artificial:	No
Typology:	Lowland Large Medium alkalinity Deep
National Grid Reference:	NK 07276 58821
Latitude:	57.61929
Longitude:	-1.87986

Current status of this water body

We have classified this water body as having an overall status of Bad with High confidence in 2008 with overall ecological status of Bad and overall chemical status of Pass.

This overall classification of status is made up of many different tiers of classification data. A complete set of classification data for 2008 is shown at the end of this document.

Targets for the future status of this water body

We have set environmental objectives for this water body over future river basin planning cycles in order that sustainable improvements to its status can be made over time, or alternatively that no deterioration in status occurs, unless caused by a new activity providing significant specified benefits to society or the wider environment.

RBMP Water body information sheet for water body 100136 in North East Scotland

For this water body we have set the overall environmental objectives for the first, second and third River Basin Management Planning (RBMP) cycles as:

Year	2008	2015	2021	2027
Status	Bad	Poor	Poor	Moderate

We have established an ongoing programme of monitoring in order to identify pressures on our water bodies. The pressures listed below contribute to this water body's failure to meet good ecological status. River basin planning allows us to plan improvements for particular parameters over time. We have collaborated with others to identify measures which will act to protect or improve our water environment in order that all water bodies reach good status over successive RBMP cycles.

Pressures and measures on this water body

The pressures listed below contribute to this water body's failure to meet good ecological status or potential. River basin planning allows us to plan improvements for particular parameters over time. We have collaborated with others to identify measures which will act to protect or improve our water environment in order that all water bodies reach good status over successive RBMP cycles.

The following table shows our collated information on the pressures on this water body, their causes and the measures which could be introduced to mitigate their effects. We have also indicated the current funding status of the measure; with projected measures being potentially funded and agreed measures having funding in place. Finally, we have included information on the potential or actual owner of the measure, the date it will be effective and information on the justification for extending the deadlines or for setting an alternative objective, where appropriate.

Pressure	As a Result of	Assessment Parameter	Objective	Reasons for Failure
	Measure	Funding	Owner	Effective date
Diffuse Source Pollution	Mixed farming	Phosphorus	Poor by 2015	Ecological recovery time
	Reduce Diffuse Source Inputs	Projected	Farmer(s)	31/12/2026
	Reduce at source	Projected	Landowner(s)	31/12/2014
	Non-urban land management measures	Agreed	Royal Society for the Protection of Birds	31/12/2009
	Reduce at source	Projected	Scottish Natural Heritage	31/12/2014
Diffuse Source Pollution	Recreational activities	Phosphorus	Poor by 2015	Ecological recovery time

RBMP Water body information sheet
for water body 100136 in North East
Scotland

Future work

Additional work to identify pressures and to develop and implement measures to mitigate their impacts will continue over subsequent river basin cycles.

Complete classification for this water body in 2008

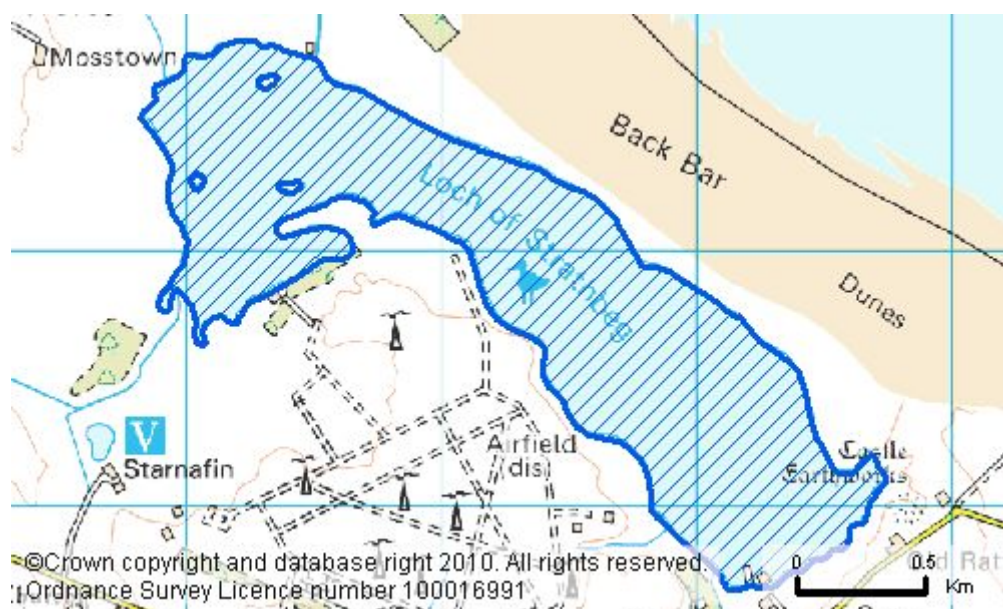
Parameter	Status	Confidence of Class
OVERALL STATUS	BAD	HIGH
Pre-HMWB status	Bad	High
Overall chemistry	Pass	Low
Priority substances	Pass	Low
Lead	Pass	Low
Overall ecology	Bad	High
Physico-Chem	Poor	High
Dissolved Oxygen	High	Low
Total Phosphorus	Poor	High
Salinity	High	High
Acid Neutralising Capacity	High	High
Biological elements	Bad	High
Phytobenthos	Moderate	Medium
Macrophytes	Good	Medium
Benthic invertebrates	Good	High
Macro-invertebrates (acid)	High	High
Macro-invertebrates (CPET)	Good	High
Alien species	High	Low
Fish barrier	High	Low
Phytoplankton	Bad	High
Chlorophyll a	Bad	High
Cyanobacteria	Good	Medium
Specific pollutants	Pass	High
Ammonium	Pass	High
Hydromorphology	High	Medium
Morphology	High	Medium

RBMP Water body information sheet for water body 100136 in North East Scotland

Parameter	Status	Confidence of Class
Hydrology	High	Medium
Water quality	Bad	
Morphological pressures	Good	

Location of this water body

You can find the geographical location of this water body by searching on water body ID in the interactive maps at www.sepa.org.uk/water/river_basin_planning.aspx



SEPA Contact Details: rbmp@sepa.org.uk
© 2009 Scottish Environment Protection Agency