

RBMP Water body information sheet for water body 100109 in West Highland

General details

Water body name:	Loch Maree
Water body Identifier code:	100109
Area:	27.98 km ²
Water body category:	Lake
Baseline:	Y
River basin district:	Scotland
Area advisory group:	West Highland
Catchment:	River Ewe
Associated protected areas:	Loch Maree Complex - SPECIAL AREA OF CONSERVATION Loch Maree - SPECIAL PROTECTION AREA
Associated groundwater:	Morar and Torridon
Responsible body:	SEPA Dingwall
Heavily modified:	No
Artificial:	No
Typology:	Lowland Large Low alkalinity Deep
National Grid Reference:	NG 93061 71605
Latitude:	57.6865
Longitude:	-5.47315

Current status of this water body

We have classified this water body as having an overall status of Good with Medium confidence in 2008 with overall ecological status of Good and overall chemical status of Pass.

This overall classification of status is made up of many different tiers of classification data. A complete set of classification data for 2008 is shown at the end of this document.

Targets for the future status of this water body

We have set environmental objectives for this water body over future river basin planning cycles in order that sustainable improvements to its status can be made over time, or alternatively that no deterioration in status occurs, unless caused by a new activity providing significant specified benefits to society or the wider environment.

RBMP Water body information sheet for water body 100109 in West Highland

For this water body we have set the overall environmental objectives for the first, second and third River Basin Management Planning (RBMP) cycles as:

Year	2008	2015	2021	2027
Status	Good	Good	Good	Good

The current status of the water body meets the requirements of the Water Framework Directive, thus we must ensure that no deterioration from good status occurs, unless caused by a new activity providing significant specified benefits to society or the wider environment.

Pressures and measures on this water body

No pressures exist on this water body.

Future work

Additional work to identify pressures and to develop and implement measures to mitigate their impacts will continue over subsequent river basin cycles.

Complete classification for this water body in 2008

Parameter	Status	Confidence of Class
OVERALL STATUS	GOOD	MEDIUM
Pre-HMWB status	Good	Medium
Overall chemistry	Pass	Low
Priority substances	Pass	Low
Lead	Pass	Low
Overall ecology	Good	Medium
Physico-Chem	High	High
Dissolved Oxygen	High	Low
Total Phosphorus	High	High
Salinity	High	High
Acid Neutralising Capacity	High	High
Biological elements	Good	Low
Phytobenthos	High	High
Macrophytes	Good	Low

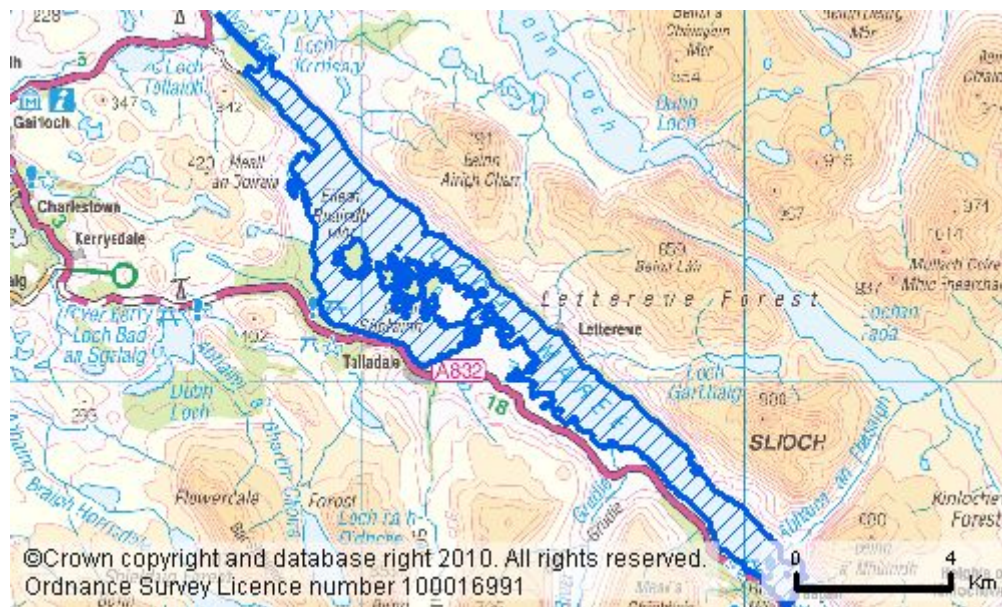
RBMP Water body information sheet for
water body 100109 in West Highland

Parameter	Status	Confidence of Class
Benthic invertebrates	High	Medium
Macro-invertebrates (acid)	High	Medium
Macro-invertebrates (CPET)	High	Low
Alien species	High	Low
Fish barrier	High	Low
Phytoplankton	High	High
Chlorophyll a	High	High
Cyanobacteria	High	Medium
Specific pollutants	Pass	High
Ammonium	Pass	High
Hydromorphology	Good	Medium
Morphology	High	Medium
Hydrology	Good	Medium
Water quality	High	
Morphological pressures	Good	

RBMP Water body information sheet for water body 100109 in West Highland

Location of this water body

You can find the geographical location of this water body by searching on water body ID in the interactive maps at www.sepa.org.uk/water/river_basin_planning.aspx



SEPA Contact Details: rbmp@sepa.org.uk
© 2009 Scottish Environment Protection Agency