

## 40 Crail (Roome Bay)



### 40.1 Background Information

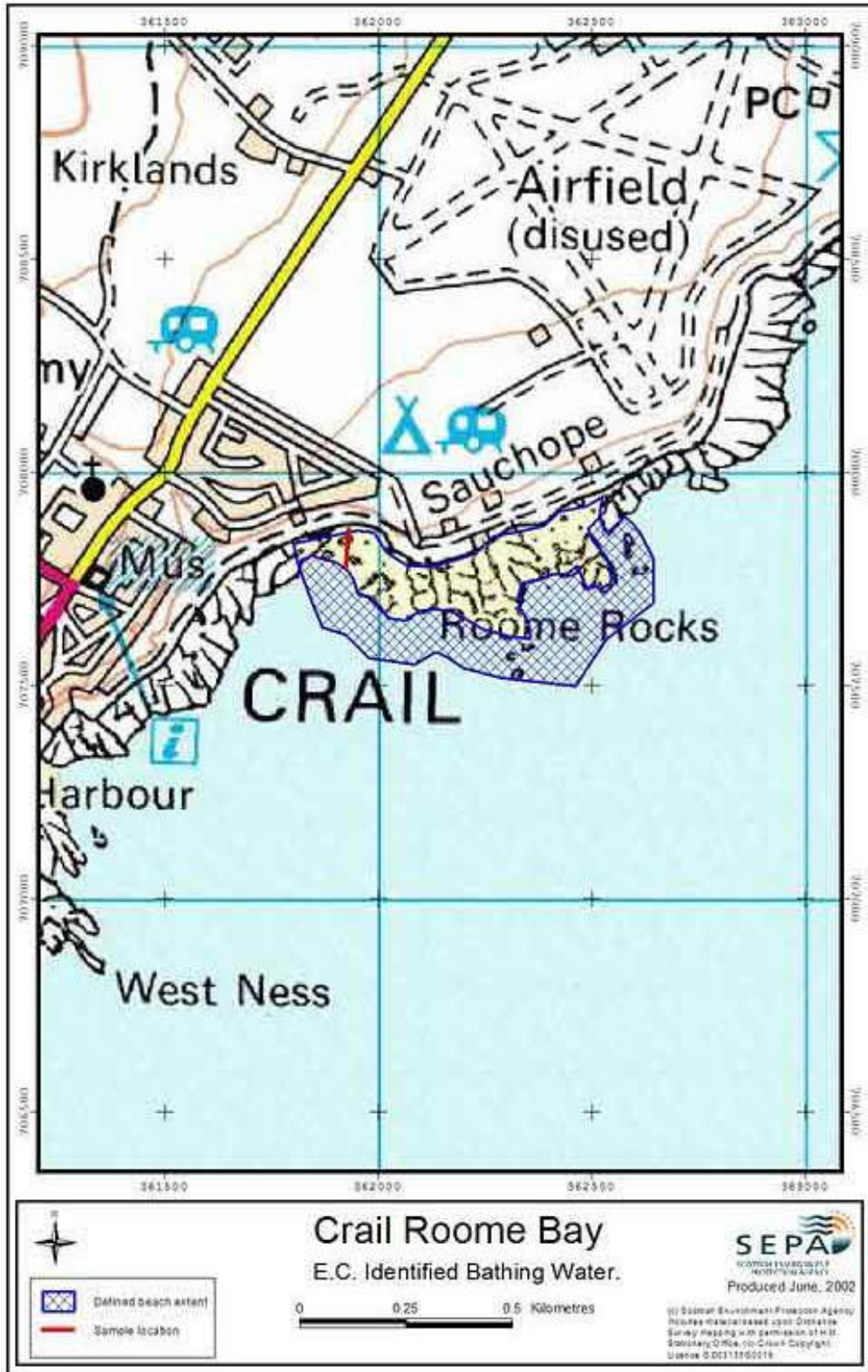
First identified as a bathing water in 1999, Crail (Roome Bay) has achieved excellent bathing water quality ever since. All local sewage sources are pumped to a Sewage Treatment Works (STW) at Kilminning which provides adequate protection of these waters.

In March 2006 the revised Bathing Water Directive (2006/7/EC) entered into force and was enacted in the UK by Regulations in 2008. Key features are tighter microbiological standards to be met by 2015 and increased provision of public information.

Compliance and pollution improvement required for the designated EU Bathing Waters will be co-ordinated through the Water Framework Directive (WFD) programme of measures which will form part of the river basin management plan. The programme of measures will outline measures (actions) that are being taken to protect and improve the water environment in the river basin district. This EU designated bathing water (protected area) pollution reduction plan will identify measures relevant to this bathing water and associated water bodies that are being undertaken as part of the programme of measures.

1997	1998	1999	2000	2001	2002	2003	2004	2005	2006	2007
Good	Excellent	Excellent	Excellent	Excellent	Excellent	Excellent	Excellent	Excellent	Excellent	Excellent

**Table 40A:** Record of Compliance for Crail (Roome bay), 1997 – 2007.



**Figure 40A:** Map of Crail (Roome Bay) designated bathing beach and surrounding local area

## 40.2 Results for 2007

Crail (Roome Bay) Results				
Date	Total Coliforms (colonies/100ml)	Faecal Coliforms (colonies/100ml)	Faecal Streptococci (colonies/100ml)	Abnormal Weather Waiver
28052007	4	<2	<2	-
21062007	52	14	2	-
08072007	186	186	104	-
31072007	38	12	<2	-
03082007	4	4	<2	-
07082007	124	56	20	-
13082007	14	6	100	-
24082007	12	4	4	-
29082007	6	2	10	-
04092007	46	10	6	-
Number of Samples taken : 10				

**Table 40B:** Microbiological results for Crail (Roome Bay) bathing water, June – September 2007

## 40.3 Scottish Water Assets

Scottish Water installed a new STW and long sea outfall at Kilminning, to the east of Crail, to which all local sewage sources are pumped.

The existing outfalls at Crail Harbour and Kirk Wynd have been converted to storm overflows (SOs), which should only discharge during exceptional conditions.

## 40.4 Other Discharges

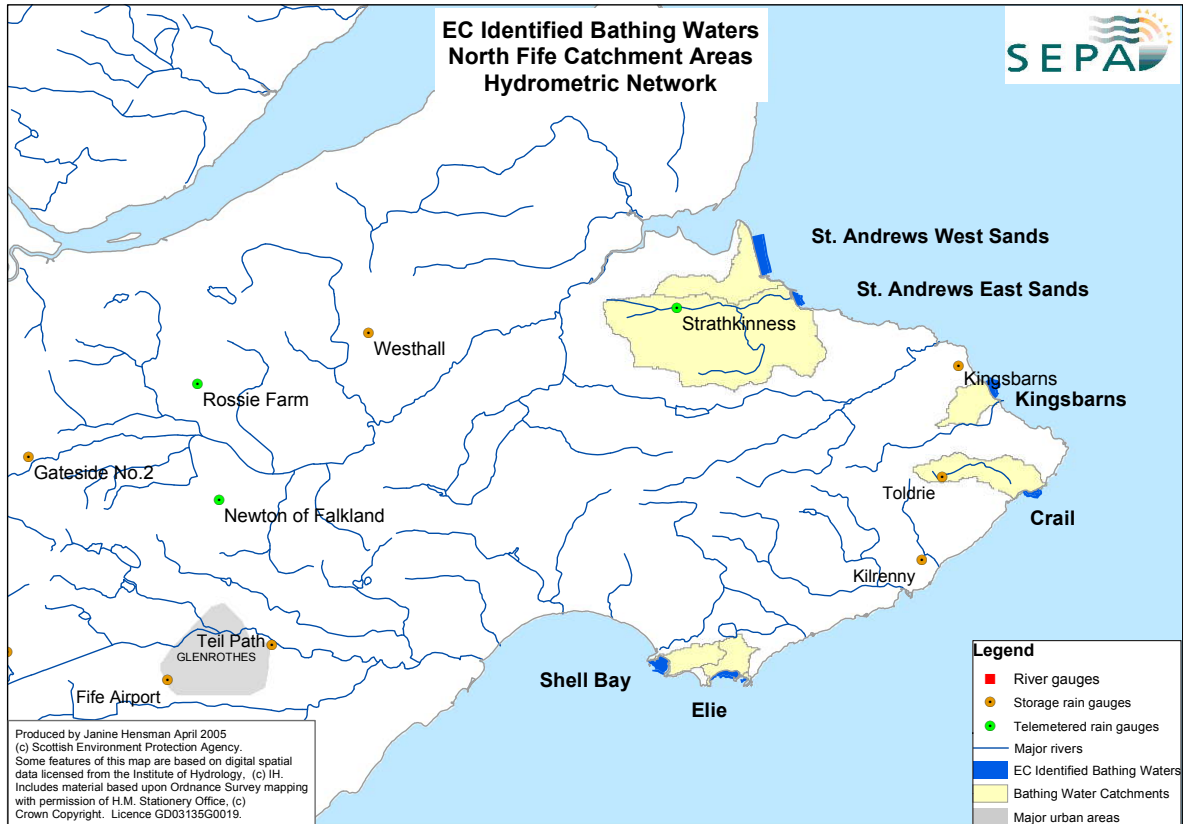
The Crail Burn which discharges to the south west of the bathing water is class A2, and is therefore unlikely to threaten the quality of the bathing waters. The tiny Den Burn which flows in from a culvert at the extreme western end of the bathing beach was identified by SEPA as a potential threat to bathing water quality due to the emergency overflow (EO) from Bow Butts Pumping Station (PS). In October 2005, Scottish water sealed this overflow off in response to action taken by SEPA.

## 40.5 Agriculture

Agriculture is not considered to have any significant impact on this bathing water.

## 40.6 Hydrometric Network

Figure 40B shows a map of the hydrometric network of the surface water catchment area of Crail (Roome Bay) bathing water.



**Figure 40B:** Hydrometric map of Crail (Roome Bay) and surrounding area.

#### 40.7 Further Investigations

SEPA will continue to monitor these waters as per the requirements of the EC Bathing Waters Directive and will continue to ensure that all sewage discharge consent conditions are met.

#### 40.8 Response to Failure

Crail (Roome Bay) has been assessed for the 2008 season as being of low risk of failing the mandatory standard.

Should there be a mandatory failure, there will be an immediate response to check all the relevant potential sources in the catchment area to confirm the reason, including follow-up microbiology sampling of the bathing water and nearby river inputs.

The regional Environmental Quality Unit will co-ordinate a response in conjunction with the local Environmental Protection and Improvement team and Environmental Science functions and post the result of the investigation and actions arising on the SEPA bathing waters internet site.