

## 28 Peterhead (Lido)



### 28.1 Background Information

Peterhead (Lido) is a sandy town beach within Peterhead harbour. Its location is unusual in that it forms the shoreline of a boating marina which is itself situated within the outer harbour. The designated sampling point is within the sandy area of the small boating marina (Fig 28A). Major works are planned for the harbour, including extending the jetties and a dredging operation. SEPA has received an application for a licence and work is due to start at the end of the 2008 bathing water season. This bathing water attracts a diverse range of water sports enthusiasts, with dinghy sailing in the sheltered waters of the bay particularly popular.

Peterhead (Lido) achieved excellent bathing water quality in 2007, continuing a generally good compliance record at this bathing water. In addition, it is a Marine Conservation Society (MCS) Recommended beach (2007), a UK award which recognises bathing waters with the highest water quality standards.

A new sewage treatment works for Peterhead was commissioned during 2001. It gives the previously untreated effluent full biological treatment, and discharges via a long sea outfall in Sandford Bay, to the south of the bathing water.

Further improvements to the sewerage infrastructure in the area were completed prior to the 2003 season. These included upgrading (screening, telemetry, spill frequency reduction) of several combined sewer overflows (CSOs) that discharge in the vicinity of the bathing water, and increase storage capacity at three pumping stations in the area to reduce the frequency of spills from their CSOs. In addition, a better telemetry system is now in place at the larger of these pumping stations, and further improvements to this pumping station, including installation of new pumps, are planned under Scottish Water's Q&S III investment programme.

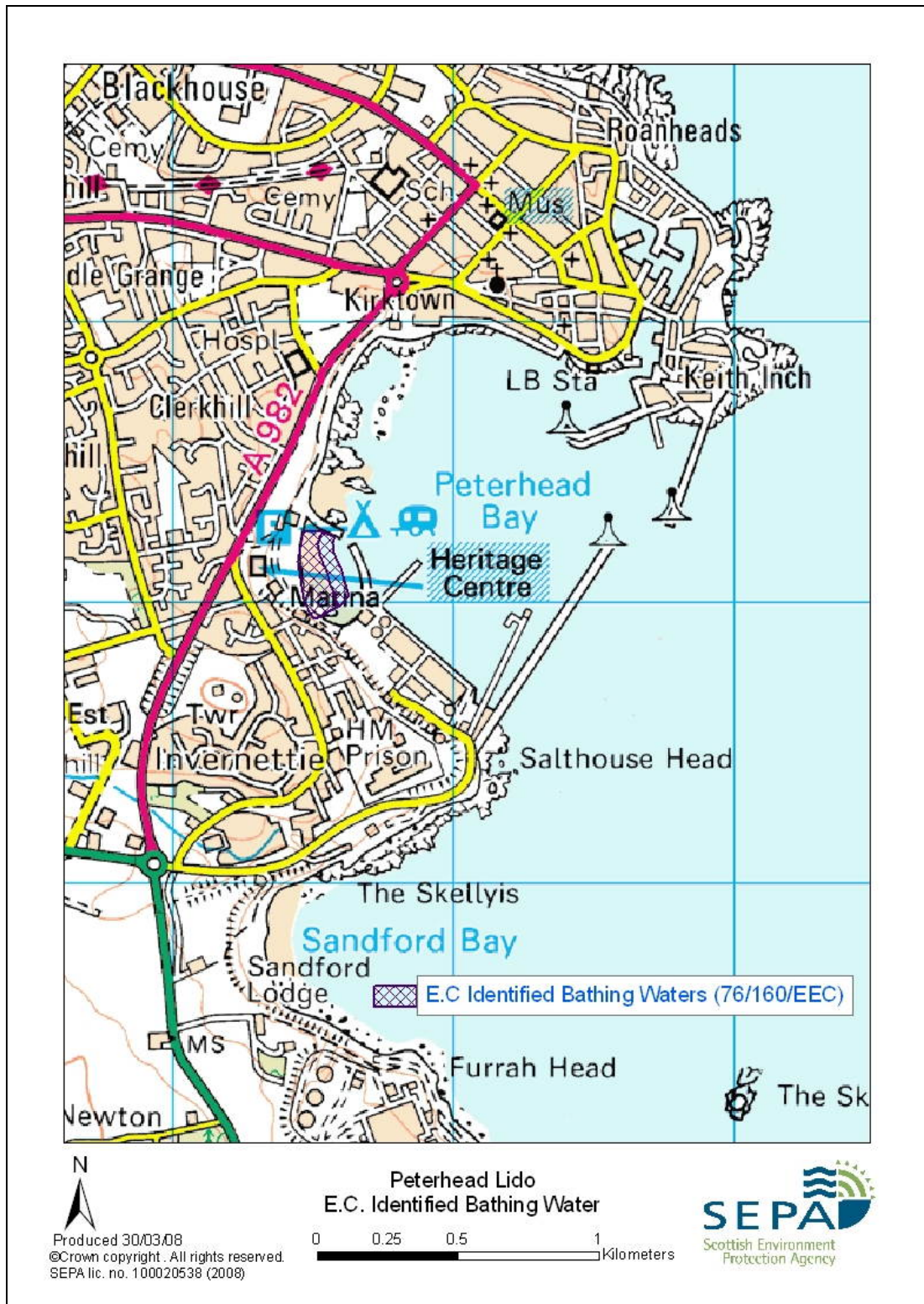
There are no rivers feeding to this bathing water. There is a small culverted burn running through the town which discharges at the northern end of the outer harbour. It receives surface water from the town and has consented CSO discharges from the main sewerage network.

In March 2006 the revised Bathing Water Directive (2006/7/EC) entered into force and was enacted in the UK by Regulations in 2008. Key features are tighter microbiological standards to be met by 2015 and increased provision of public information.

Compliance and pollution improvement required for the designated EU Bathing Waters will be co-ordinated through the Water Framework Directive (WFD) programme of measures which will form part of the river basin management plan. The programme of measures will outline measures (actions) that are being taken to protect and improve the water environment in the river basin district. This EU designated bathing water (protected area) pollution reduction plan will identify measures relevant to this bathing water and associated water bodies that are being undertaken as part of the programme of measures.

1997	1998	1999	2000	2001	2002	2003	2004	2005	2006	2007
Good	Good	Excellent	Excellent	Good	Poor	Excellent	Good	Excellent	Excellent	Excellent

**Table 28A:** Record of Compliance for Peterhead (Lido), 1997-2007.



**Figure 28A:** Map of Peterhead (Lido) designated bathing beach and surrounding local area.

## 28.2 Results for 2007

Peterhead (Lido) Results				
Date	Total Coliforms (colonies/100ml)	Faecal Coliforms (colonies/100ml)	Faecal Streptococci (colonies/100ml)	Salinity
24-May-2007	4 (G)	2 (G)	3 (G)	34.5
6-Jun-2007	42 (G)	10 (G)	3 (G)	34.9
12-Jun-2007	50 (G)	10 (G)	4 (G)	37.4
19-Jun-2007	30 (G)	10 (G)	2 (G)	34.2
27-Jun-2007	8 (G)	2 (G)	4 (G)	34.7
2-Jul-2007	400 (G)	128 (M)	46 (G)	33.3
6-Jul-2007	14 (G)	6 (G)	12 (G)	-
8-Jul-2007	24 (G)	12 (G)	1 (G)	-
10-Jul-2007	32 (G)	4 (G)	4 (G)	-
20-Jul-2007	4 (G)	4 (G)	0 (G)	33.2
24-Jul-2007	34 (G)	8 (G)	13 (G)	34.8
27-Jul-2007	14 (G)	4 (G)	5 (G)	33.4
30-Jul-2007	114 (G)	76 (G)	40 (G)	31.6
2-Aug-2007	46 (G)	44 (G)	86 (G)	33.4
7-Aug-2007	14 (G)	4 (G)	26 (G)	34.4
8-Aug-2007	200 (G)	200 (M)	61 (G)	34.2
15-Aug-2007	100 (G)	100 (G)	36 (G)	37.5
21-Aug-2007	54 (G)	28 (G)	26 (G)	33.4
28-Aug-2007	126 (G)	84 (G)	14 (G)	35
4-Sep-2007	74 (G)	74 (G)	54 (G)	35.2

**Table 28B:** Microbiological results for Peterhead (Lido) bathing beach, May-Sept 2007.

## 28.3 Scottish Water Assets

There are no continuous sewage discharges in the immediate vicinity of the bathing water, although there are a number of consented combined sewer overflows (CSOs) and emergency overflows (EOs), listed below. One of these discharges just beyond the marina (School Road CSO), and the remainder all discharge via the same outfall just beyond the northern end of the bay. Consent conditions have been designed to protect the bathing water. Q&S III work including replacement of pump sets and control panels at pumping station No. 3 is due to be carried out in 2008.

It is believed that problems with the sewer network leading to intermittent discharges from a nearby CSO, have been resolved. However the outfall will continue to be inspected by SEPA and Scottish Water. This exercise will be repeated prior to the start of the 2008 bathing season.

Pumping Station No. 3, South Road EO
Pumping Station No. 3, South Road CSO
Cairntrodlie CSO
Station Road CSO
Strawberry Bank CSO
School Road CSO

**Table 28C:** Consented Scottish Water discharges (sewage) relevant to the bathing beach.

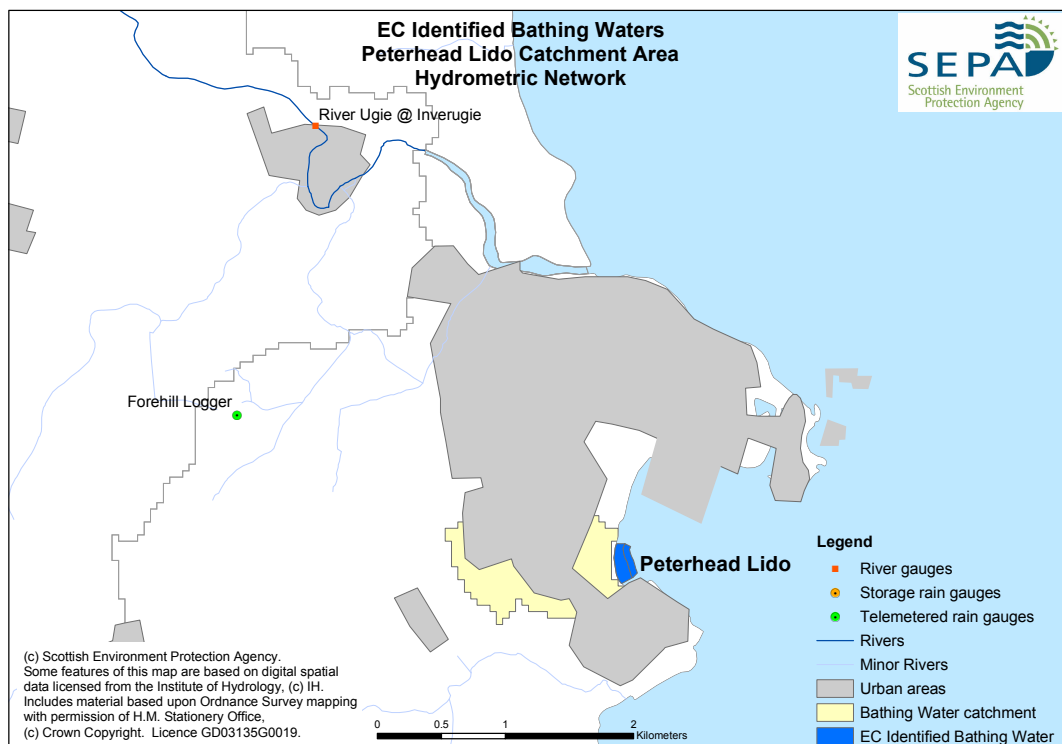
#### 28.4 Other Discharges

There are no other significant discharges in the area which are likely to be influencing the bacterial levels in bathing water.

#### 28.5 Agriculture

There are no agricultural diffuse pressures acting on this bathing water.

#### 29.6 Hydrometric Network



**Figure 28B:** Hydrometric map of Peterhead (Lido) and surrounding area.

#### 28.7 Further Investigations

Given the continued good quality of the bathing water at this site there are no requirements for additional investigations aimed at improving the water quality here at present. The bathing waters will continue to be routinely sampled throughout the bathing season, and consented discharges in the vicinity monitored to ensure they comply with the required standards set by SEPA.

## **28.8 Response to Failure**

Peterhead (Lido) beach has been assessed for the 2008 season as at low risk of failing to meet the Directive's standards, as guideline standards have been met for the last three years, and pressures on the bathing water minimised.

Should there be a mandatory failure, there will be an immediate response to check all the relevant potential sources and major discharges in the catchment area to confirm the reason, e.g. if there has been a failure of any of the works, pumping stations or CSOs and/or whether the failure was due to high river flows, taking account of SEPA's hydrometric information. In addition, immediate follow-up microbiology sampling will be undertaken of the failed beach, and of nearby river inputs where appropriate.

The regional Environmental Quality Unit will co-ordinate a response in conjunction with the local Environmental Protection and Improvement team and Science functions, and post the result of the investigation and actions arising on the SEPA bathing waters internet site.