

17 Ganavan Bay



17.1 Background Information

Ganavan Bay has two sandy beaches a few miles north of Oban. The beaches are secluded and provide excellent views for visitors to enjoy. Identified as a bathing water in 1999 Ganavan Bay has achieved at least good quality status since its designation. In 2007 the beach retained its Seaside Award in the rural category. The Seaside Award acknowledges those beaches with good management, which are clean, safe and display up-to-date information to the public.

A Scottish Water pumping station pumps sewage from the Ganavan public system to Oban for treatment at the sewage treatment works prior to discharge into the Sound of Kerrera. This works, serving the resident population of Oban (9,000 rising to 20,000 in summer), discharges offshore into deep water approximately 2 km to the south of the bathing water. Despite this scheme, the local bathing water is not consistently meeting guideline standards, and a local caravan site is now required by SEPA to upgrade its sewage treatment facility.

In March 2006 the revised Bathing Water Directive (2006/7/EC) entered into force and was enacted in the UK by Regulations in 2008. Key features are tighter microbiological standards to be met by 2015 and increased provision of public information.

Compliance and pollution improvement required for the designated EU Bathing Waters will be co-ordinated through the Water Framework Directive (WFD) programme of measures which will form part of the river basin management plan. The programme of measures will outline measures (actions) that are being taken to protect and improve the water environment in the river basin district. This EU designated bathing water (protected area) pollution reduction plan will identify measures relevant to this bathing water and associated water bodies that are being undertaken as part of the programme of measures.

1997	1998	1999	2000	2001	2002	2003	2004	2005	2006	2007
n/s	n/s	Good	Good	Good	Good	Good	Excellent	Good	Good	Good

Table 17A: Record of compliance for Ganavan Bay, 1997-2007.



Figure 17A: Map of the Ganavan Bay designated bathing beach and surrounding local area.

17.2 Results for 2007

Ganavan Results				
Date	Total Coliforms (colonies/100ml)	Faecal Coliforms (colonies/100ml)	Faecal Streptococci (colonies/100ml)	Salinity
24-May-2007	270 (G)	80 (G)	10 (G)	33.7
7-Jun-2007	50 (G)	2 (G)	<2 (G)	33.1
14-Jun-2007	20 (G)	14 (G)	2 (G)	33.6
22-Jun-2007	182 (G)	180 (M)	<10 (G)	34.4
27-Jun-2007	<10 (G)	2 (G)	<2 (G)	32.8
2-Jul-2007	120 (G)	78 (G)	26 (G)	33.5
5-Jul-2007	50 (G)	38 (G)	14 (G)	31.2
10-Jul-2007	10 (G)	<2 (G)	4 (G)	33.4
20-Jul-2007	30 (G)	2 (G)	<2 (G)	33.9
24-Jul-2007	10 (G)	<2 (G)	2 (G)	34.1
27-Jul-2007	230 (G)	104 (M)	4 (G)	29.4
1-Aug-2007	90 (G)	82 (G)	10 (G)	30
8-Aug-2007	1090 (M)	690 (M)	72 (G)	30.9
9-Aug-2007	620 (M)	590 (M)	14 (G)	33.1
16-Aug-2007	190 (G)	98 (G)	22 (G)	29.8
22-Aug-2007	40 (G)	36 (G)	2 (G)	32
24-Aug-2007	20 (G)	2 (G)	6 (G)	33
27-Aug-2007	260 (G)	122 (M)	18 (G)	30.3
30-Aug-2007	960 (M)	550 (M)	50 (G)	-
4-Sep-2007	40 (G)	38 (G)	10 (G)	30.2

Table 17B: Microbiological results for Ganavan Bay bathing beach, May-Sept 2007.

17.3 Scottish Water Assets

A new pumping station was constructed in 2003 to transfer sewage from a public septic tank serving Ganavan village to Oban sewage treatment works. Consent has been granted for an intermittent discharge of screened sewage from the pumping station under emergency conditions only.

Ganavan Pumping Station Emergency Overflow
--

Table 17C: Monitored Scottish Water assets affecting Ganavan Bay bathing beach.

17.4 Other Discharges

The only other significant discharge into Ganavan Bay is from a septic tank serving the caravan park and Ganavan Pavilion. The consent for this has been reviewed to ensure that the mandatory bathing water standard will be achieved.

17.5 Agriculture

Agriculture has no impact on the catchment area of Ganavan Bay.

17.6 Hydrometric Network

The network for assessing bathing water hydrometric information for Ganavan Bay is shown in Figure 17B and, as there are no major rivers discharging into the bay, consists solely of one rain gauge situated beside the bay.

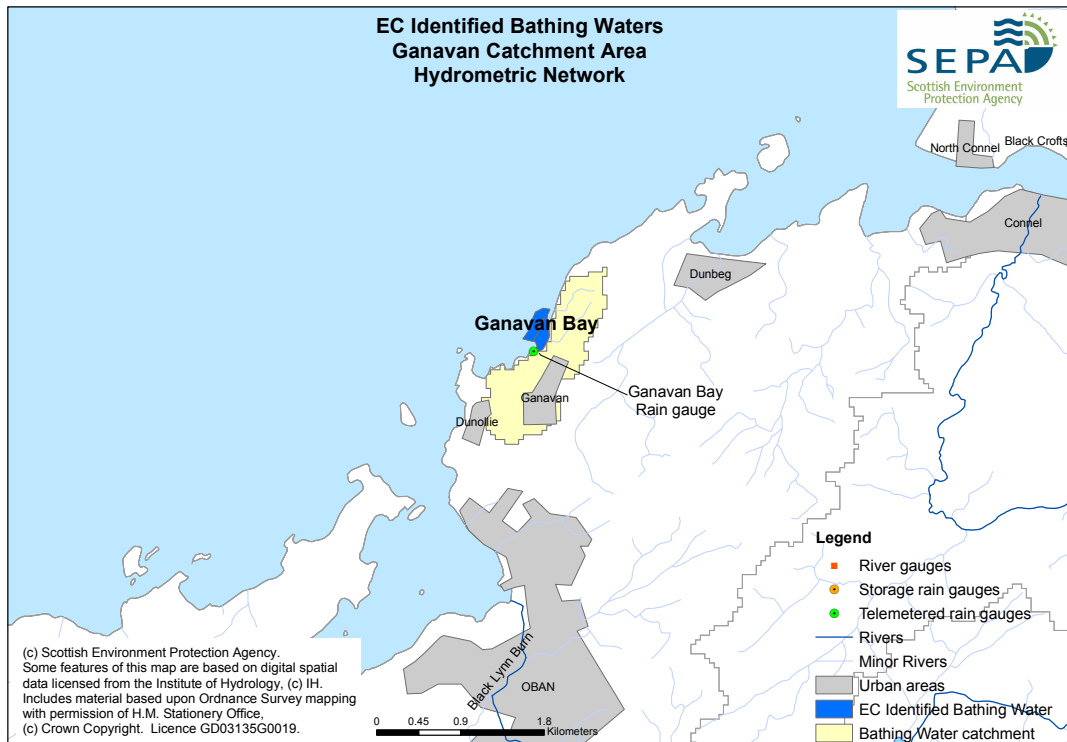


Figure 17B: Hydrometric map of Ganavan Bay and surrounding area.

17.7 Further Investigations

The private septic tank at Ganavan Bay will continue to be monitored. The pumping station serving Ganavan has telemetry and should ensure a swift response from Scottish Water should there be power failure/rising main blockage. SEPA will monitor the pumping station on a regular basis. There are no other point discharges into the bay and very low risk of diffuse pollution therefore no other monitoring will be carried out.

17.8 Response to Failure

Ganavan Bay has been assessed for the 2008 season as at low risk of failing to meet the Directive's standards. This is due to its consistent compliance with mandatory standards since its designation as a bathing water.

Should there be a mandatory failure, there will be an immediate response to check all the relevant potential sources in the catchment area to confirm the reason. Follow up microbiology sampling will be undertaken of the failed beach and of nearby river inputs where appropriate.

The regional Environmental Quality Unit will co-ordinate a response in conjunction with the local Environmental Protection and Improvement team and science functions and post the result of the investigation and actions arising on the SEPA bathing waters internet site.